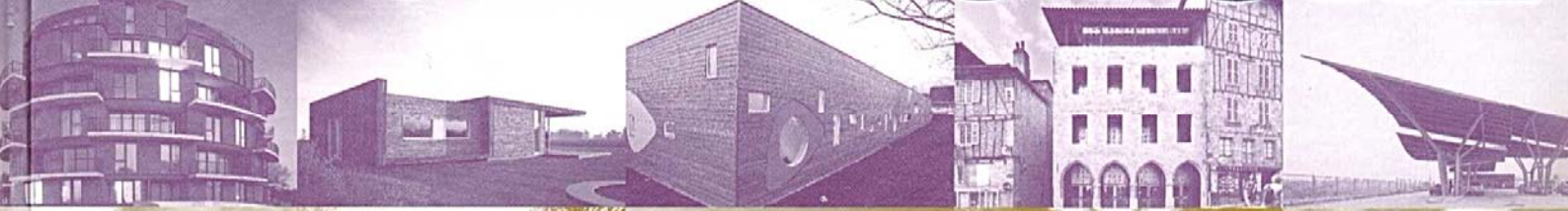


10000x

New Edition
100%
new projects

EUROPEAN ARCHITECTURE



BRAUN





01



02

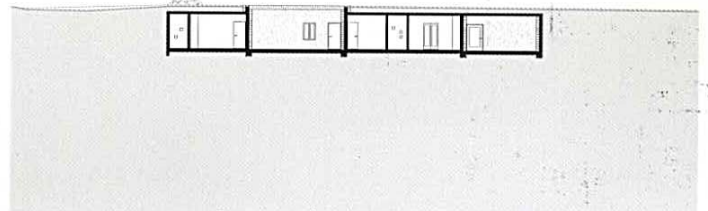


03

Aloni

The design of this house is a dual response to the topography of the site and to the rural domestication techniques that shaped the raw landscape of the Cycladic island in the past. In the north to south axis, the slope rises between two hills, while in the east to west axis the slope drops, opening to the sea views. The house nestles in the space while maintaining the continuity of the landscape which flows over it. This simple strategy blurs the edges of the house and makes its mass imperceptible within the broader context. The courtyards separate the living spaces into five interior areas. As a result, the house is protected from the elements yet is full of natural light, with a compact but rich relationship to its setting.

01 Aerial view | 02 Interior terrace | 03 West view with pool | 04 Section



04